

WHAT ARE OLD GROWTH FORESTS AND HOW IS NTITYIX RESOURCES MANAGING THEM?

Recently there has been much discussion about old growth forests, what they are, what they provide, and even more talk on how to protect them. This document describes a little bit about old growth within the forests that Ntityix Resources stewards on behalf of WFN and introduces a proposed WFN strategy for preserving old growth forests both immediately and for generations to come.



It is no secret that old growth forests are immensely important and provide a huge range of values for the land, the water, the plants, the animals and the human spirit.

There is no such thing as a simple definition of *Old Growth* and that is because old

growth forests are so different everywhere. Syilx people know that old forests in our territory are more frequently exposed to wildfires, insects, and disease than those on the coast. Our land, plants and animals are unique to our part of the world. Old forests are not the same everywhere nor can all old forests be cared for in the same manner.



Earlier this year the Provincial government formed the Old Growth Technical Advisory Committee and in early November they released maps showing where they propose old growth forests be deferred from logging; a commendable gesture, but flawed from the onset as First Nations were not involved in the process and only given 30 days to provide comment. Some of these

deferred areas are located within WFN's forest tenures.

What the Province did not recognize was that for the past six years Ntityix Resources has been on the ground mapping and trying to identify the most important places in our tenures to protect and care for old forests. This process involved getting out on the land and looking at where we can build a connective network of old forests that protect water, wildlife, plants, Syilx culture and biodiversity, and doing so with the perspective of having this network of old forests strong and healthy seven generations from now and beyond.

On the next few pages are some maps that show the Province's plan and WFN's proposed strategy on where old forests should be protected within WFN's forest tenures.

The first two maps show WFN's forest tenures on the east side of Okanagan Lake, near Big White.

The second two maps show WFN's forest tenure on the west side of Okanagan Lake.

Both sets have maps that show areas in highlighted in green, one showing the Province's current Old Growth plan and another map showing Ntityix Resources proposed concept of where to protect and

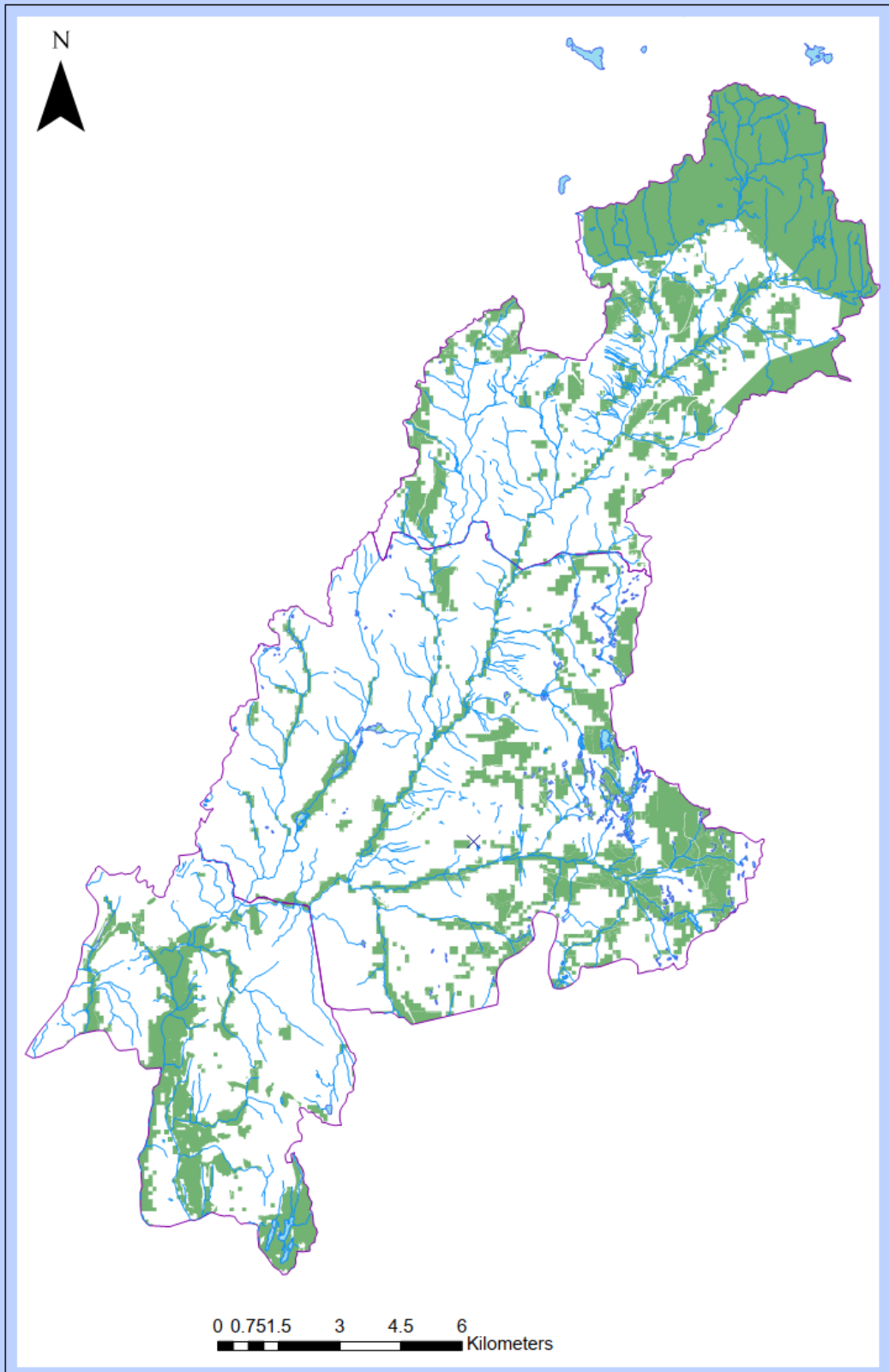
care for old forests. The green represents old growth forests.

Syilx elders have repeatedly stated that all lands must be cared for, young, middle-aged and old forests all need our care. Our responsibility is to steward all forests. We want to have our old trees live a long time and help them resist disease, insects, and catastrophic wildfire and ensure we have healthy young trees and middle-aged trees in the understory to eventually take their place. Syilx people cared for the land and stewarded our forests to keep them healthy for generations. Today many of our forests, including some of the old growth forests, are sick and they need our attention.

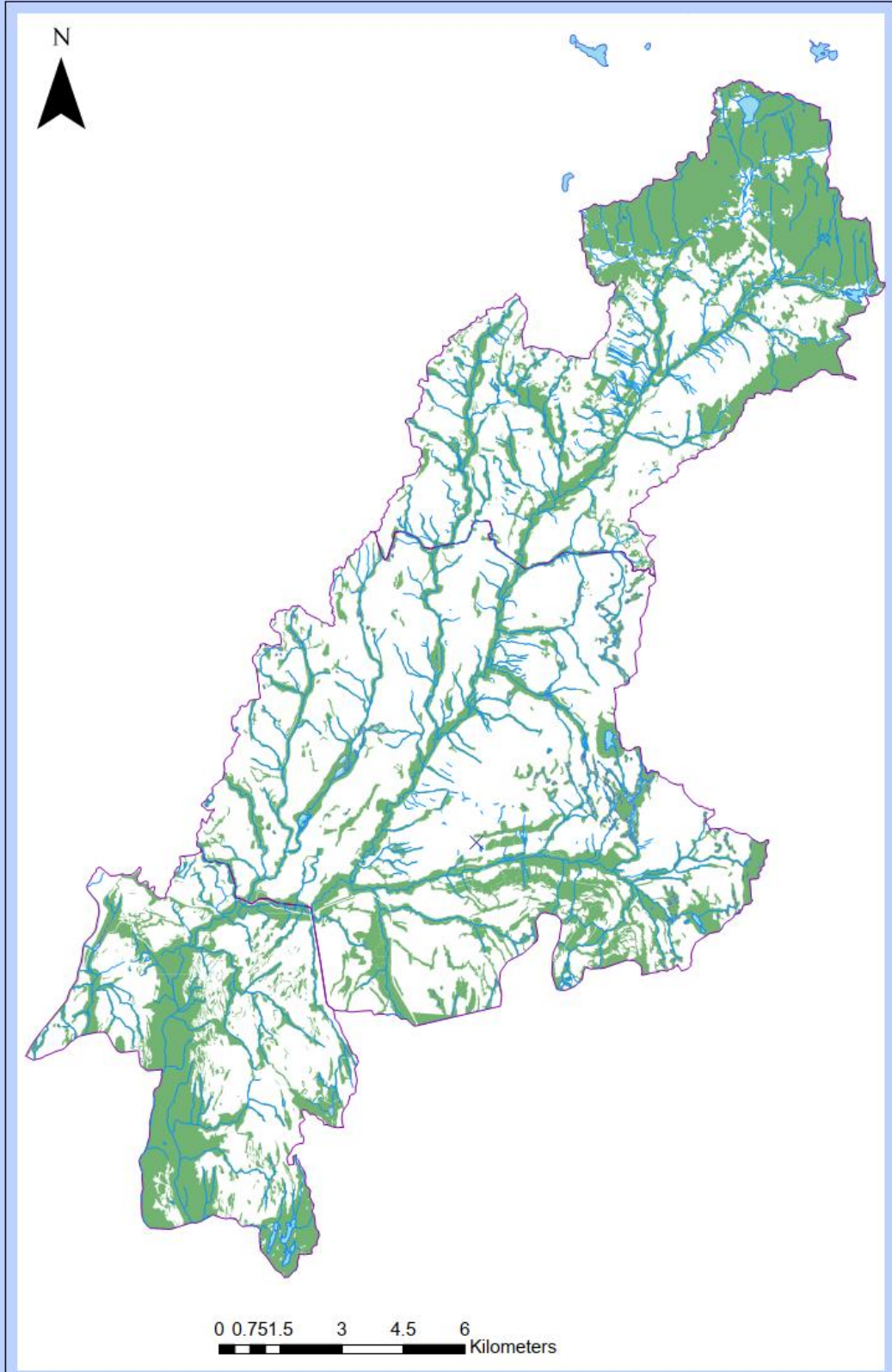
The white areas on the maps within the purple lines consist of areas that have either already been harvested or are forests planned to be harvested over the next 40 years. Some of these areas previously harvested now have forests more than 50 years old. Much of the area in white has and will always have forests older than 80 years.

Ntityix's new harvesting guidelines do not permit any harvesting using the traditional large clearcutting methods of the past. Please contact us for further information.

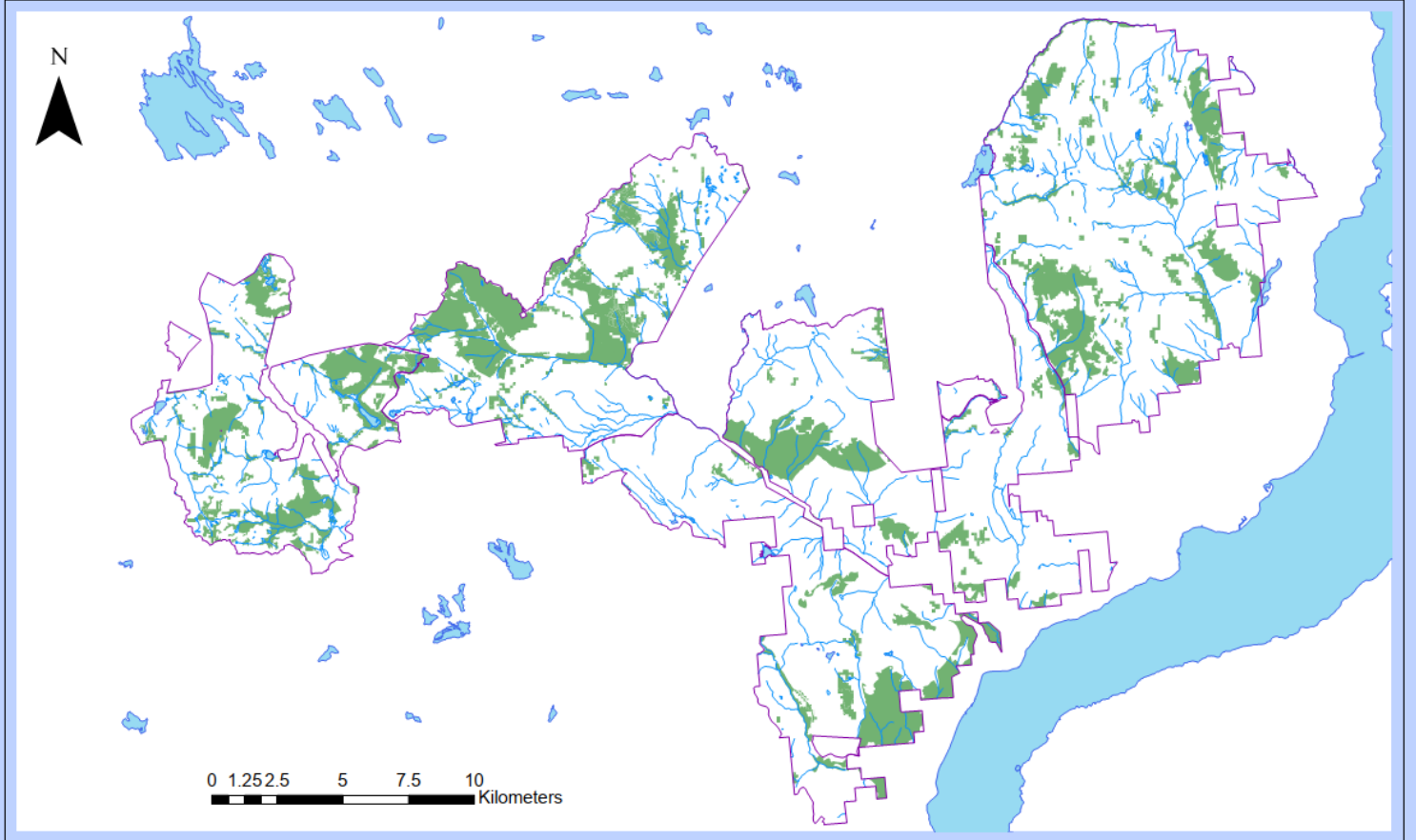
Province's Old Growth Areas - WFN East



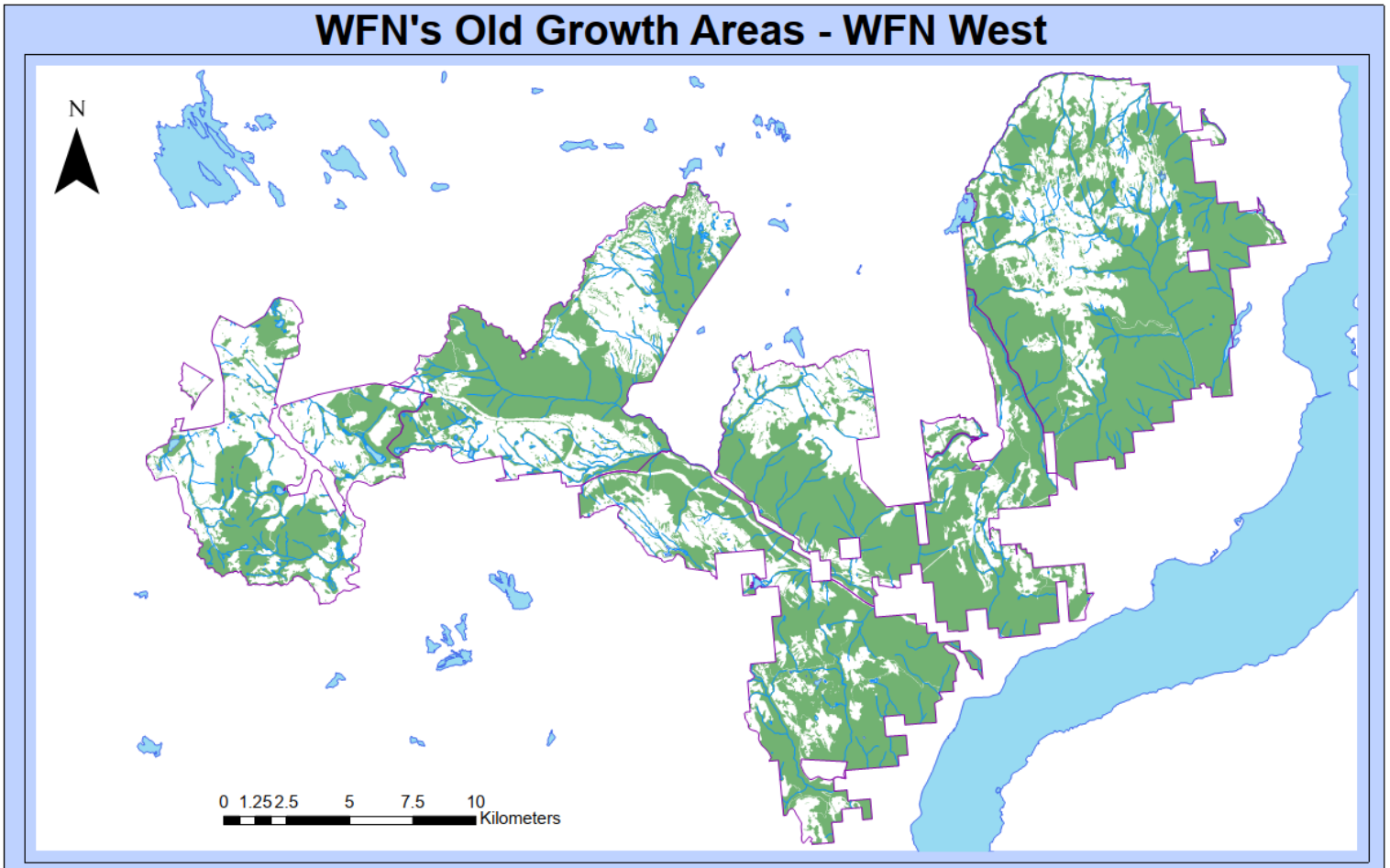
WFN's Old Growth Areas - WFN East



Province's Old Growth Areas - WFN West



WFN's Old Growth Areas - WFN West



We encourage everyone who is interested in providing some thoughts on our strategy to contact us. We are looking to you to ensure we're on track and to help us to develop a thorough and comprehensive plan that represents the interests of the WFN community.

We don't for an instant think we have the plan "right", a plan such as this will be ongoing, never 'completed'; we envision it will pass on from one generation to the next and continually improve as time goes on.

If you'd like to provide comments or arrange a time to discuss this important topic please send an email to dgill@ntityix.com.

lim lemp